

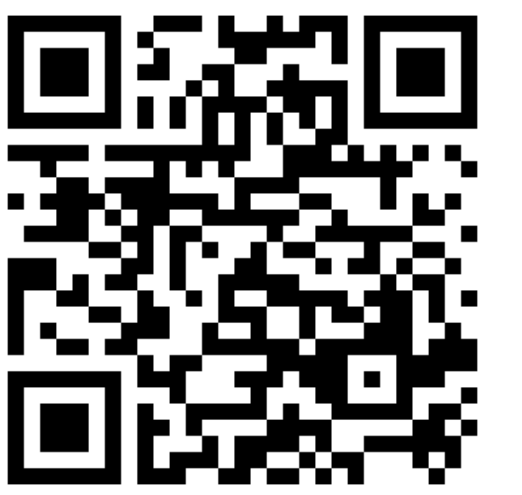
A comprehensive toolbox for ecological study of fire salamanders *Salamandra* spp. – ManderMatcher



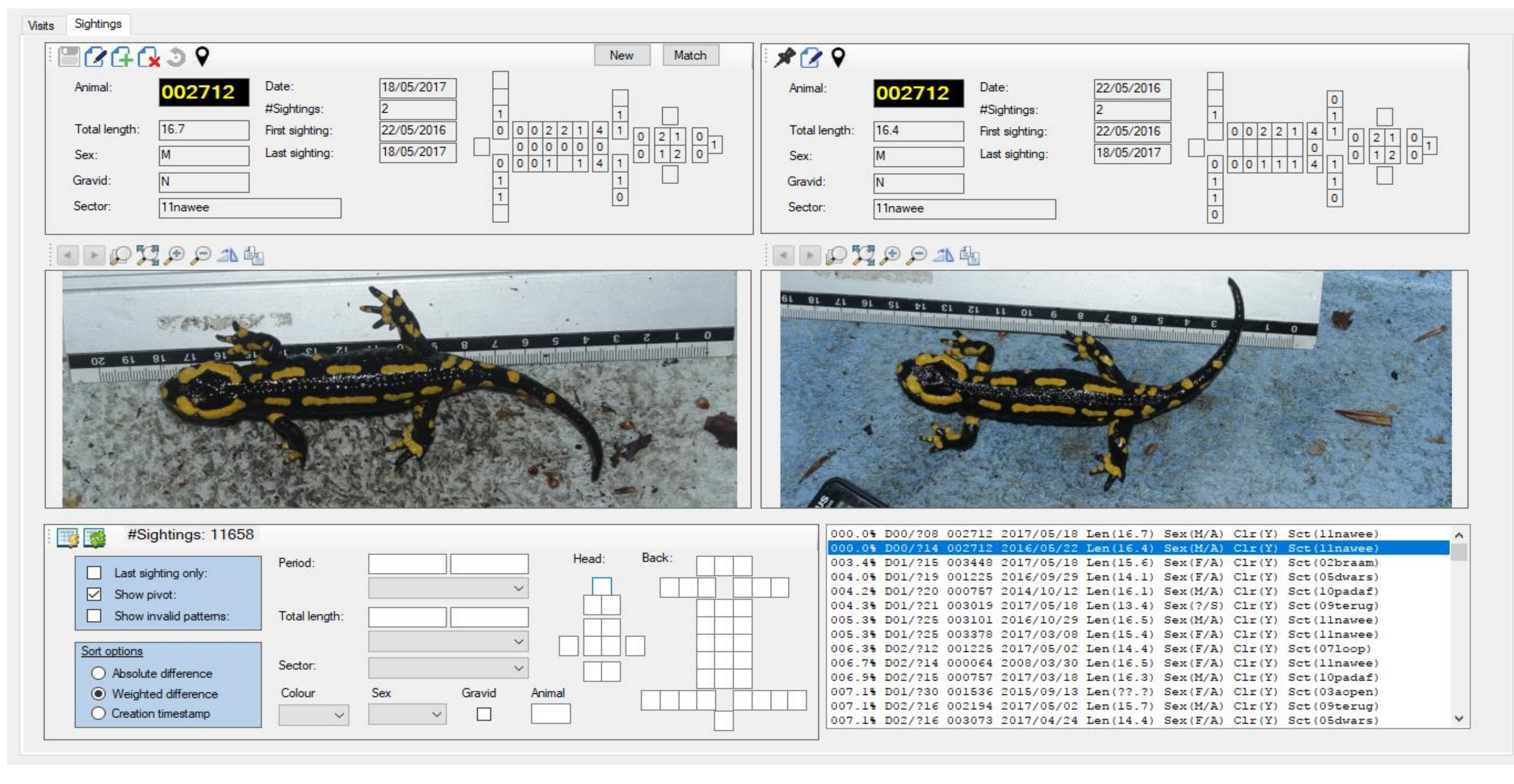
Jeroen Speybroeck & Koen Steenhoudt
jeroen.speybroeck@inbo.be



<https://jeroenspeybroeck.shinyapps.io/mandermatcher>



Enter and store capture-mark-recapture (CMR) data and several other data types with **ManderMatcher program**



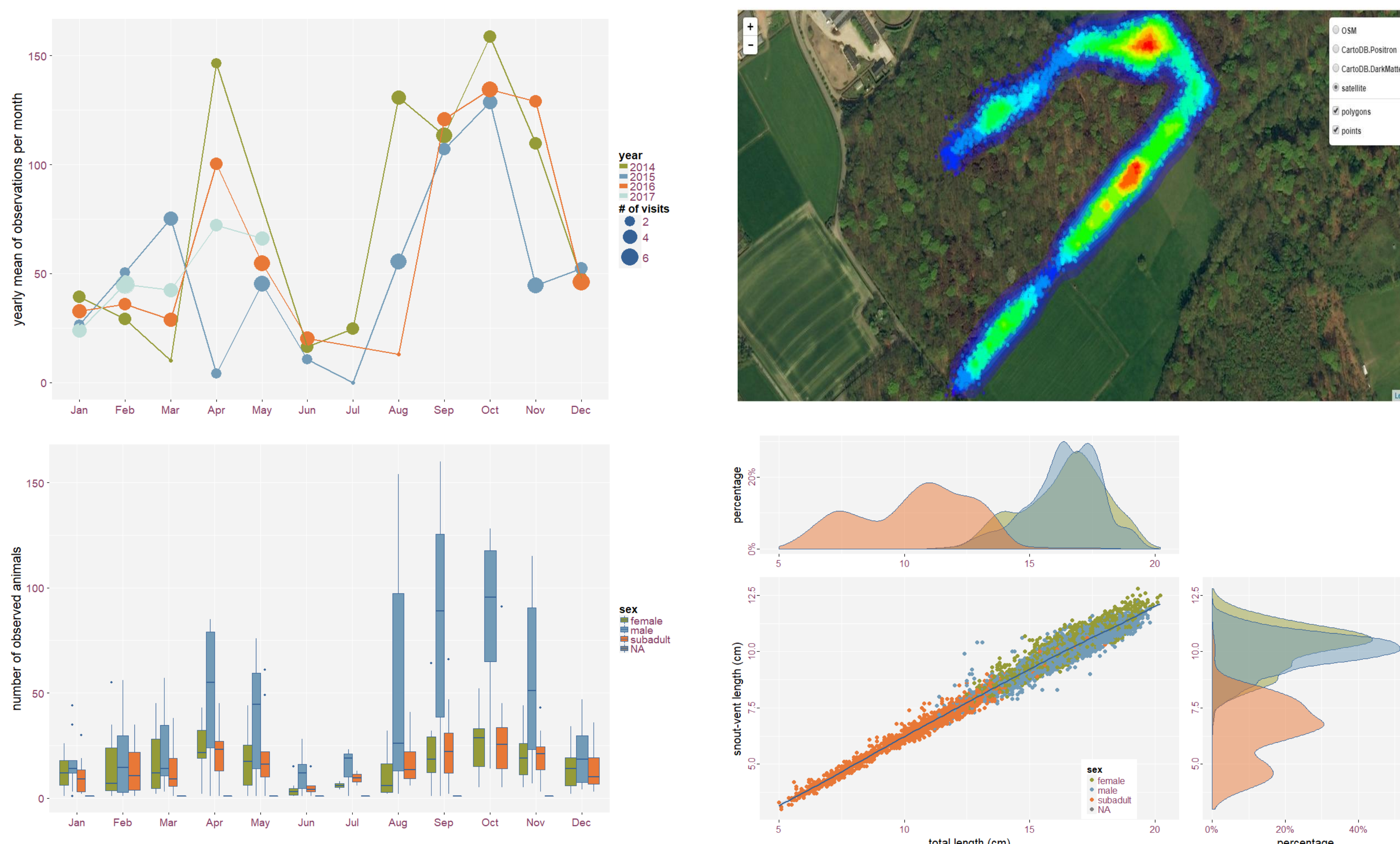
Features

- storage of count event data
- pattern coding and storage of individual record data
- CMR matching

Compared to similar CMR methods

- + fast processing (20 records/hour)
- + options to filter matching result
- + no image processing
- + suitable for large, long-term datasets
- + freely available
- + storage of numerous other types of ecological data

Use the program data to create graphs, maps and tables for data exploration with **ManderMatcher web app**



Features

automated data exploration from data entered into the ManderMatcher program