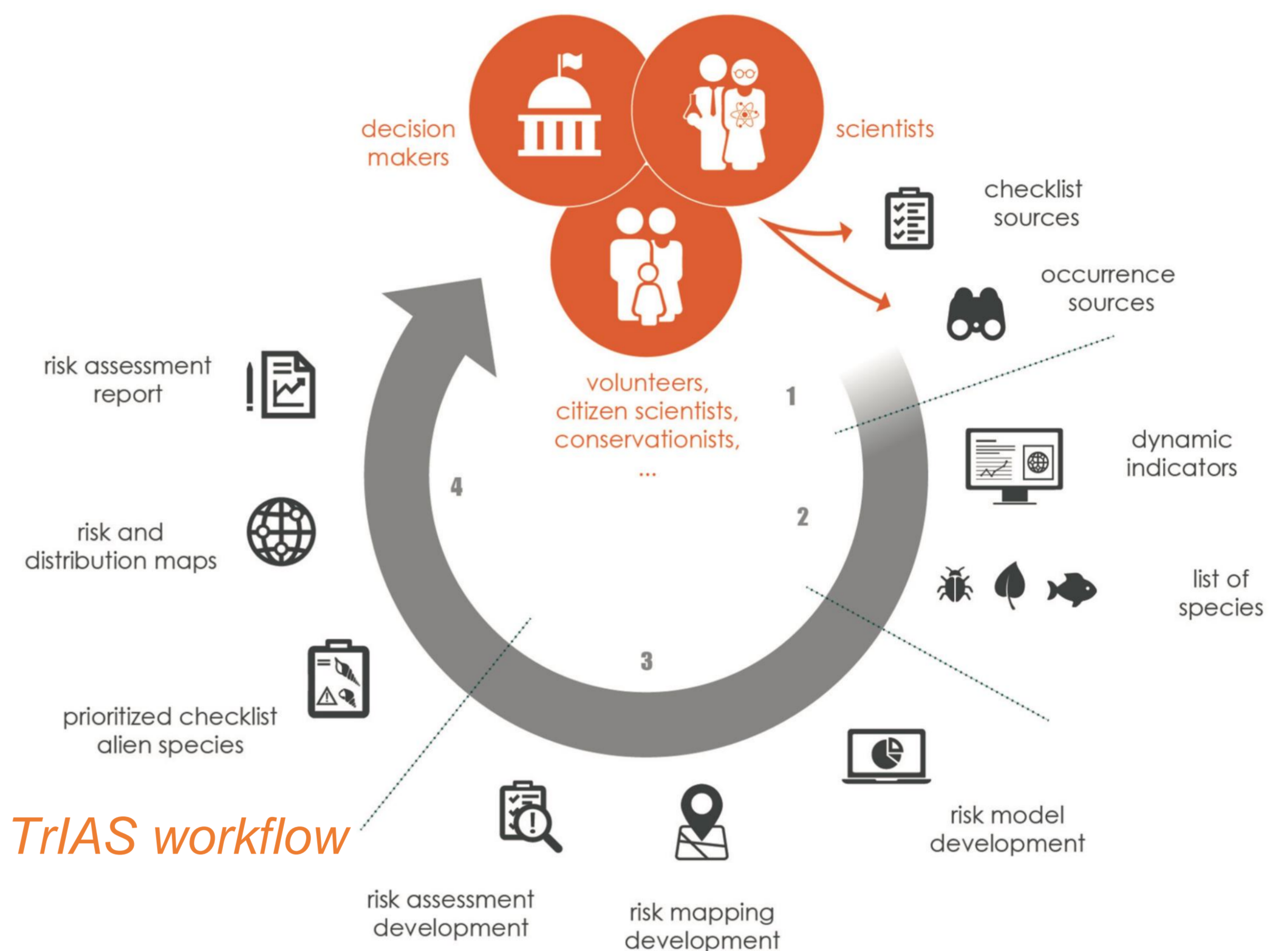


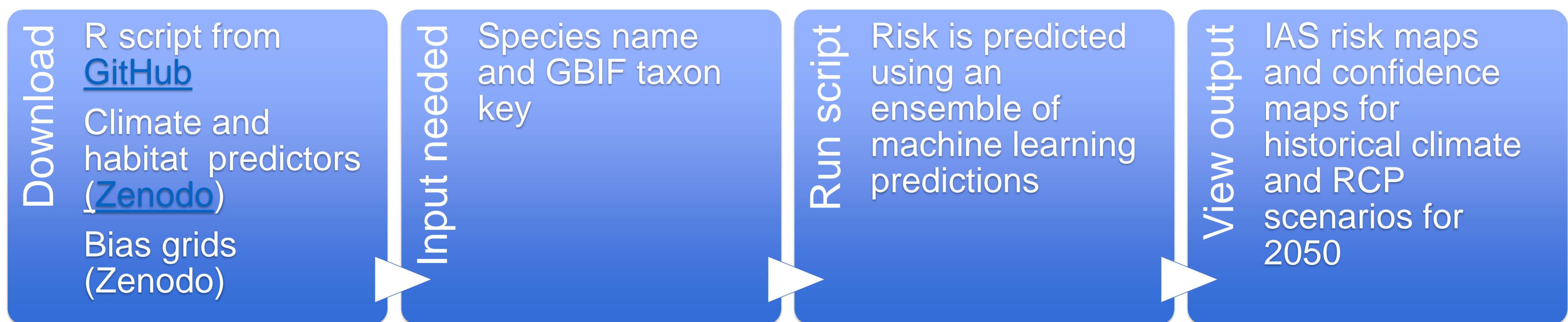
IAS risk mapping in Belgium

Our reproducible workflow automatically:

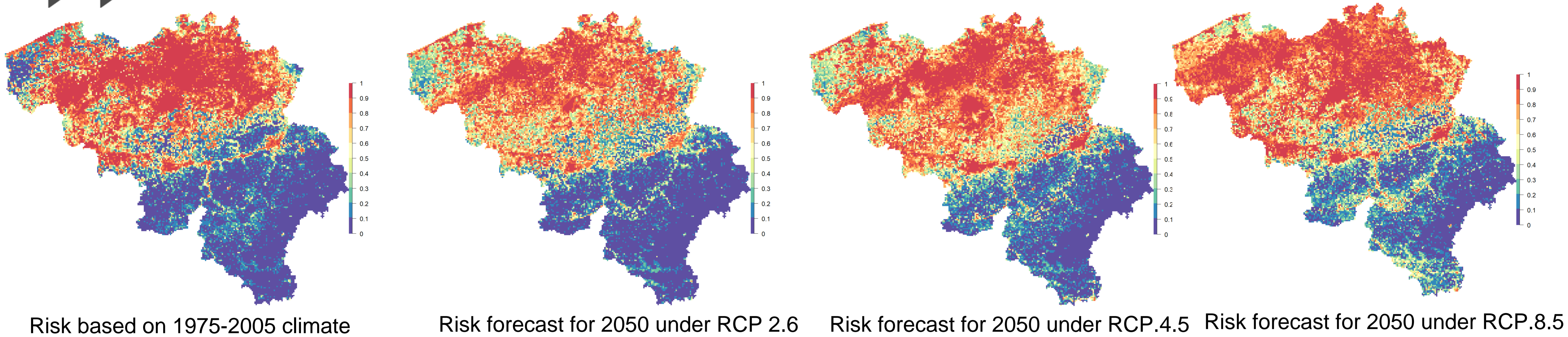
- Incorporates global occurrence data to derive European level species distribution models (SDMs)
- Addresses sampling bias
- Filters occurrence data if necessary
- Provides IAS risk maps (1km²) using GBIF occurrence data for any European country



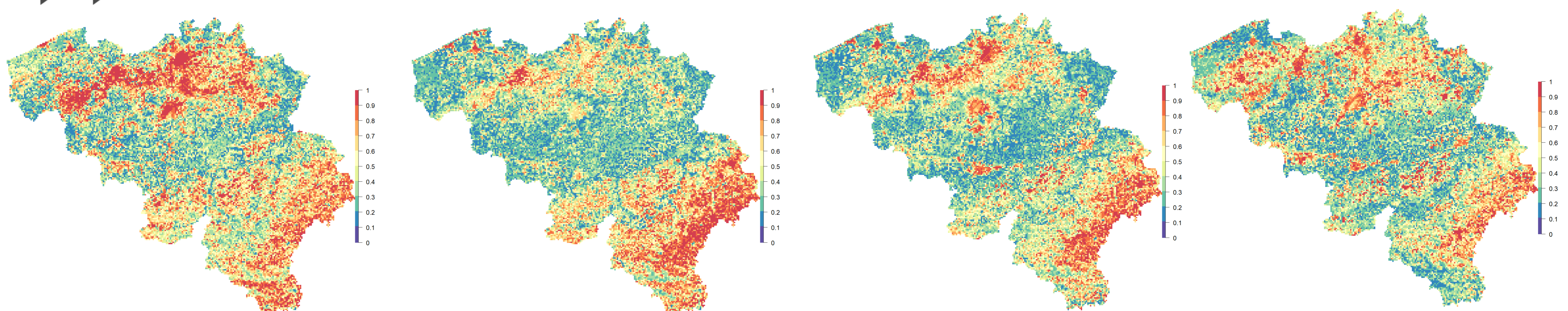
How you can create automated IAS risk maps



Example Output: IAS (*Cyperus eragrostis*) risk maps for Belgium



Example Output: Confidence of *Cyperus eragrostis* risk maps



These maps illustrate the confidence of the predictions of each of the risk maps above.



For a detailed overview of the risk modeling framework used and for the R script visit <https://github.com/trias-project/risk-modelling-and-mapping>