

Report on the main results of the surveillance under article 11 for annex II, IV and V species (Annex B)

SPECIES NAME: **Lampetra planeri**

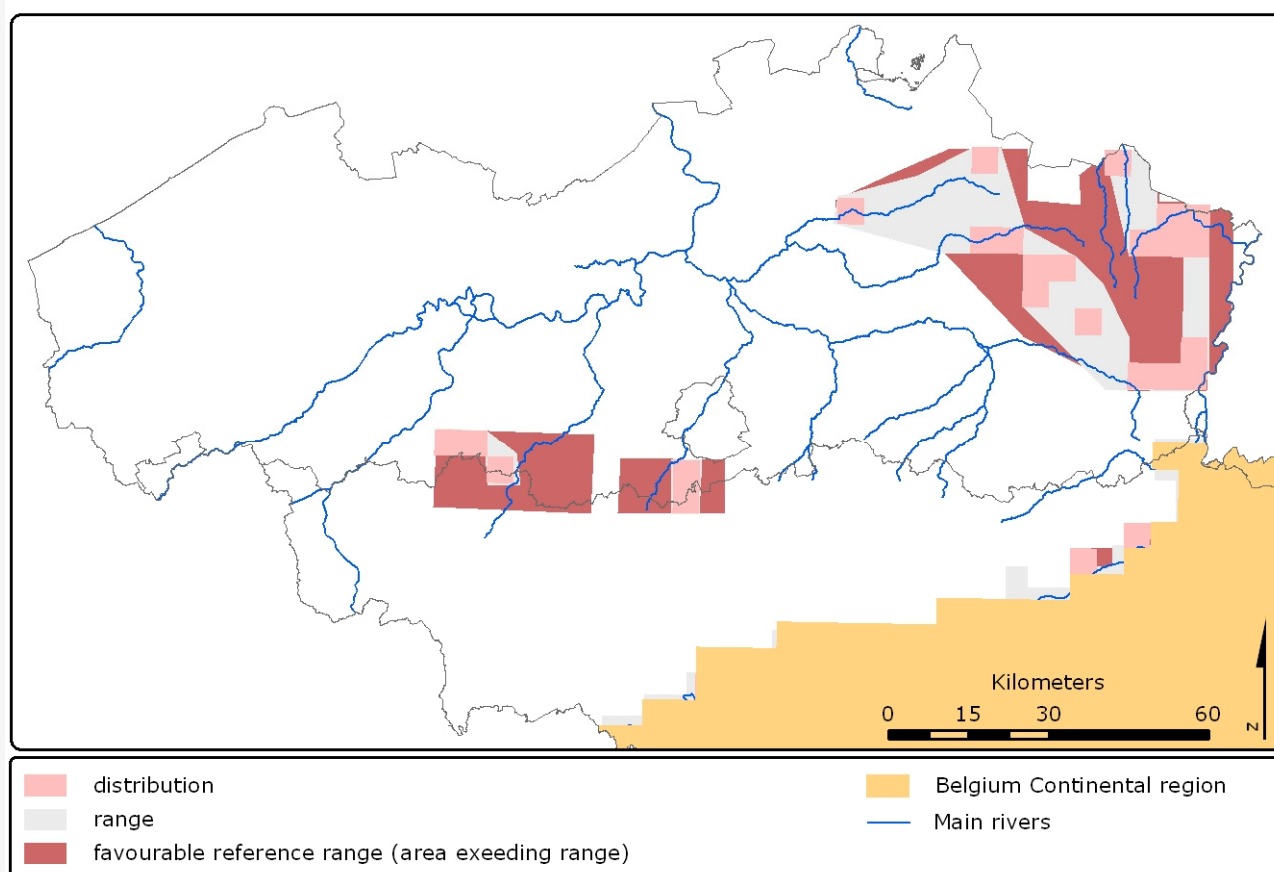
1. National level

Biogeographic regions and/or marine regions concerned in the MS: **ATL CON**

2. Biogeographical or marine level

2.1 Biogeographical region or marine region: Atlantic

Simoens I. & Van Thuyne G. (2008) Conservation status of the Natura 2000 species Brook lamprey (*Lampetra planeri*) for the Belgian Atlantic region, In: Paelinckx D., Van Landuyt W. & De Bruyn L. (ed.). Conservation status of the Natura 2000 habitats and species. Report of the Research Institute for Nature and Forest, INBO.R.2008.15. Brussels. In prep



2.2 Published sources and/or websites | <http://vis.milieuinfo.be/> www.inbo.be/natura2000be

2.3 Range of species in the biogeographic region or marine region

2.3.1 Surface range of the species in km ²	1379.3
2.3.2 Date of range determination	1995-2006
2.3.3 Quality of data concerning range	Good e.g based on extensive surveys
2.3.4 Range trend	Stable (=)

2.3.5 Range trend magnitude (km ²) - optional	N/A
2.3.6 Range trend period	1995-2006
2.3.7 Reasons for reported trend	Direct human influence (restoration, deterioration, destruction) Water quality increased
Other (specify)	Water quality increased

2.4 Population of the species in the biogeographic region or marine region

2.4.1 Population size estimation		
Minimum population	Maximum population	Population units
23	23	Grids
2.4.2 Date of population estimation	1995-2006	
2.4.3 Method used for population estimation	Extrapolation from surveys of part of the population or from sampling	
2.4.4 Quality of population data	Good e.g based on extensive surveys	
2.4.5 Population trend	Stable (=)	
2.4.6 Population trend magnitude	0	
2.4.7 Population trend period	1995-2006	
2.4.8 Reasons for reported trend	Direct human influence (restoration, deterioration, destruction) water quality improvement	
Other (specify)	water quality improvement	
2.4.9 Justification of % thresholds for trends (optional)	N/A	
2.4.10 Main pressures	120 Fertilisation 400 Urbanised areas, human habitation 701 - water pollution 803 - infilling of ditches, dykes, ponds, pools, marshes or pits 820 Removal of sediments (mud...) 830 Canalisation 852 - modifying structures of inland water courses 952 - eutrophication	
2.4.11 Threats	120 Fertilisation 400 Urbanised areas, human habitation 701 - water pollution 803 - infilling of ditches, dykes, ponds, pools, marshes or pits 830 Canalisation 852 - modifying structures of inland water courses 952 - eutrophication	

2.5 Habitat for the species in the biogeographic region or marine region

2.5.1 Habitats for the species	Lampetra planeri lives in middle and small streams, and rivers with good water quality. They need clean sunny gravel or sand beds to spawn in and silt or sand for the larvae.
2.5.2 Area estimation (km ²)	N/A
2.5.3 Date of estimation	2006
2.5.4 Quality of the data	Poor e.g. based on very incomplete data or on expert judgement
2.5.5 Trend of the habitat	Stable (=)
2.5.6 Trend period	1995-2006
2.5.7 Reasons for reported trend	Direct human influence (restoration, deterioration, destruction) Water quality increased

Other (specify)	Water quality increased	
2.6 Future prospects for the species	Poor prospects - species likely to struggle unless conditions change	
2.7 Complementary information		
2.7.1 Favourable reference range (km ²)	2375	
2.7.2 Favourable reference population	More than field 2.4.1 23	
2.7.3 Suitable habitat for the species	N/A	
2.7.4 Other relevant information	N/A	
Conclusion	Biogeographical or marine level	Conclusions within Natura 2000 sites (optional)
(2.3) Range	Bad (U2)	N/A
(2.4) Population	Inadequate (U1)	N/A
(2.5) Habitat for the species	Bad (U2)	N/A
(2.6) Future prospects	Inadequate (U1)	N/A
Overall assessment	Bad (U2)	N/A