

Report on the main results of the surveillance under article 11 for annex I habitat types (Annex D)

CODE: **1310**

NAME: **1310 Salicornia and other annuals colonizing mud and sand**

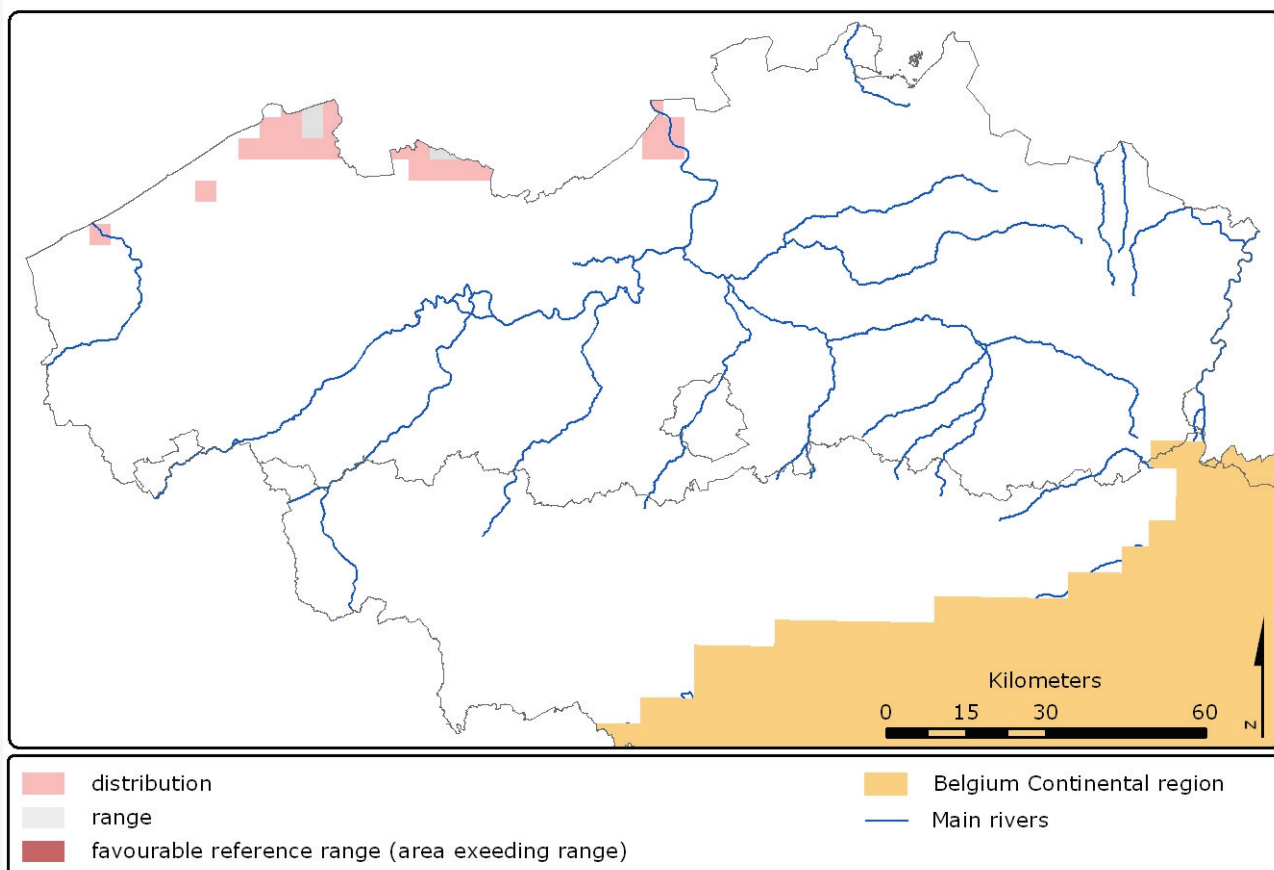
1. National level

Biogeographic regions and/or marine regions concerned within the member state: **ATL**

2. Biogeographical or marine level

2.1 Biogeographic region or marine region: Atlantic

Vriens L., Vandevoorde B., Van den Bergh E., Hoffmann M. & Paelinckx D. (2008) Conservation status of the Natura 2000 habitat 1310 (Salicornia and other annuals colonizing mud and sand) for the Belgian Atlantic region, In: Paelinckx D., Van Landuyt W. & De Bruyn L. (ed.). Conservation status of the Natura 2000 habitats and species. Report of the Research Institute for Nature and Forest, INBO.R.2008.15. Brussels. In prep



2.2 Published sources and/or websites | www.inbo.be/natura2000

2.3 Range of the habitat type in the biogeographic region or marine region

2.3.1 Surface area of range in km² | 340

2.3.2 Date of range determination | 1994-2006

2.3.3 Quality of data concerning range | Good e.g based on extensive surveys

2.3.4 Range trend	Decreasing (-)
2.3.5 Range trend magnitude in km ² (optional)	N/A
2.3.6 Range trend period	1994-2006
2.3.7 Reasons for reported trend	Direct human influence (restoration, deterioration, destruction) Natural processes
Other (specify)	N/A

2.4 Area covered by habitat type in the biogeographic region or marine region

2.4.1 Surface area of the habitat type (km ²)	0.67
2.4.2 Date of area estimation	1994-2006
2.4.3 Method used for area estimation	Ground based survey (based on field mapping, possibly using stratified random sampling)
2.4.4 Quality of data on area	Good e.g based on extensive surveys
2.4.5 Area trend	Increasing (+)
2.4.6 Area trend magnitude (km ²)	N/A
2.4.7 Area trend period	1994-2006
2.4.8 Reasons for reported trend	Direct human influence (restoration, deterioration, destruction)
Other (specify)	N/A
2.4.9 Justification of % thresholds for trends (optional)	N/A
2.4.10 Main pressures	110 Use of pesticides 120 Fertilisation 221 - bait digging 504 - port areas 520 Shipping 621 - nautical sports 622 - walking, horseriding and non-motorised vehicles 701 - water pollution 709 - other forms or mixed forms of pollution 810 Drainage 820 Removal of sediments (mud...) 900 Erosion 920 Drying out 943 - collapse of terrain, landslide
2.4.11 Threats	110 Use of pesticides 120 Fertilisation 221 - bait digging 504 - port areas 520 Shipping 701 - water pollution 709 - other forms or mixed forms of pollution 810 Drainage 820 Removal of sediments (mud...) 900 Erosion 920 Drying out

2.5 Complementary information

2.5.1 Favourable reference range (km ²)	340
2.5.2 Favourable reference area (km ²)	More than field 2.4.1 0.67
2.5.3 Typical species	Salicornia europaea / L.
2.5.3 Typical species	Salicornia procumbens / Smith
2.5.3 Typical species	Salicornia pusilla / J. Woods

2.5.3 Typical species	Suaeda maritima / (L.) Dum.	
2.5.4 Typical species assessment	Flora squares with > 1 typical species have good local conservation status	
2.5.5 Other relevant information (optional)	Although the area estimation has a good quality, quantitative data on trends are lacking.	
Conclusion	Biogeographical or marine level	Conclusions within Natura 2000 sites (optional)
(2.3) Range	Bad (U2)	N/A
(2.4) Area	Inadequate but improving (U1+)	N/A
(2.5) Structure and function, including typical species	Inadequate (U1)	N/A
Future prospects	Inadequate (U1)	N/A
Overall assessment	Bad (U2)	N/A